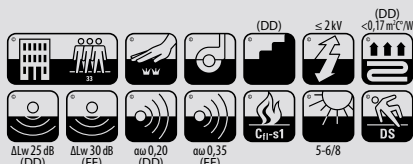




signature / signature confort +

UPEC
CSTB
U3P3E1C0
04/035 (DD)
05/213 (FE)



Composition 100% Polyamide
Pile material 100% Nylon
Polmaterial 100% Polyamid
Poolmateriaal 100% Polyamide
Composición 100% Poliamida
Composizione 100% Poliammide
Skład runa 100% Poliamid

Poids de velours / Pile weight /
Poleinsatzgewicht / Poolinzetmassa /
Peso fibra / Peso felpa / Gramatura
830 g/m²

Poids total - NF ISO 8543 / Total weight /
Gesamtgewicht / Totaal gewicht /
Peso total / Peso totale / Masa całkowita
1 820 g/m² (DD)
2 140 g/m² (FE)

Épaisseur totale - NF ISO 1765 /
Total thickness / Gesamtdicke /
Totale massa / Altura total /
Spessore totale / Wysokość całkowita
6,5 mm (DD)
8,5 mm (FE)

Hauteur du velours - NF ISO 1766 /
Pile height / Polhöhe / Poolhoogte /
Altura fibra / Spessore felpa / Wysokość runa
3,7 mm (DD)
4,2 mm (FE)

Envers / Backing /
Rückenausstattung / **Double dossier / Action back (DD)**
Rug / Soporte / **Double dossier feutre Confort + /**
Sottofondo / Podklad **Feltback confort + (FE)**

Jauge - Serrage (points) - Densité - NF ISO 1763
Gauge - Rows (points) - Tufts **1/10^e**
Teilung - Stiche (points) - Noppenzahl **53 p**
Rijen - Deling (points) - Noppenaantal
Galga - Densidad (puntos) **209 350 p/m²**

Comportement au feu Cfl-s1 - collé sur ciment
Fire resistance Cfl-s1 - glued on cement
Brennverhalten Cfl-s1 - geklebt auf Zement
Brandgedrag Cfl-s1 - verlijmd op cement
Clasificación al fuego Cfl-s1 - pegado en cemento
Comportamento al fuoco Cfl-s1 - incollato su cemento
Trudnozupalność Cfl-s1 - klejone na podłożu betonowym

HQE Ce produit répond parfaitement à 8 des 14 cibles (DD)
HQE This product meets perfectly 8 from the 14 targets
HQE Dieses Produkt erfüllt 8 von den 14 Zielen
HQE Dit product beantwoordt aan 8 van de 14 doelstellingen
HQE Este producto responde perfectamente a 8 de los 14 objetivos
HQE Questo prodotto risponde perfettamente a 8 di 14 target
HQE Ten produkt odpowiada 8 z 14 kryteriów

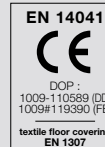


Absorption aux bruits aériens - NF EN ISO 11654
Sound absorption / Schallabsorptionsgrad /
Geluidsabsorptie / Absorción de los ruidos
aéreos / Isolazione acustica /
Pochłanianie dźwięku
αw 0,20 (DD)
αw 0,35 (FE)

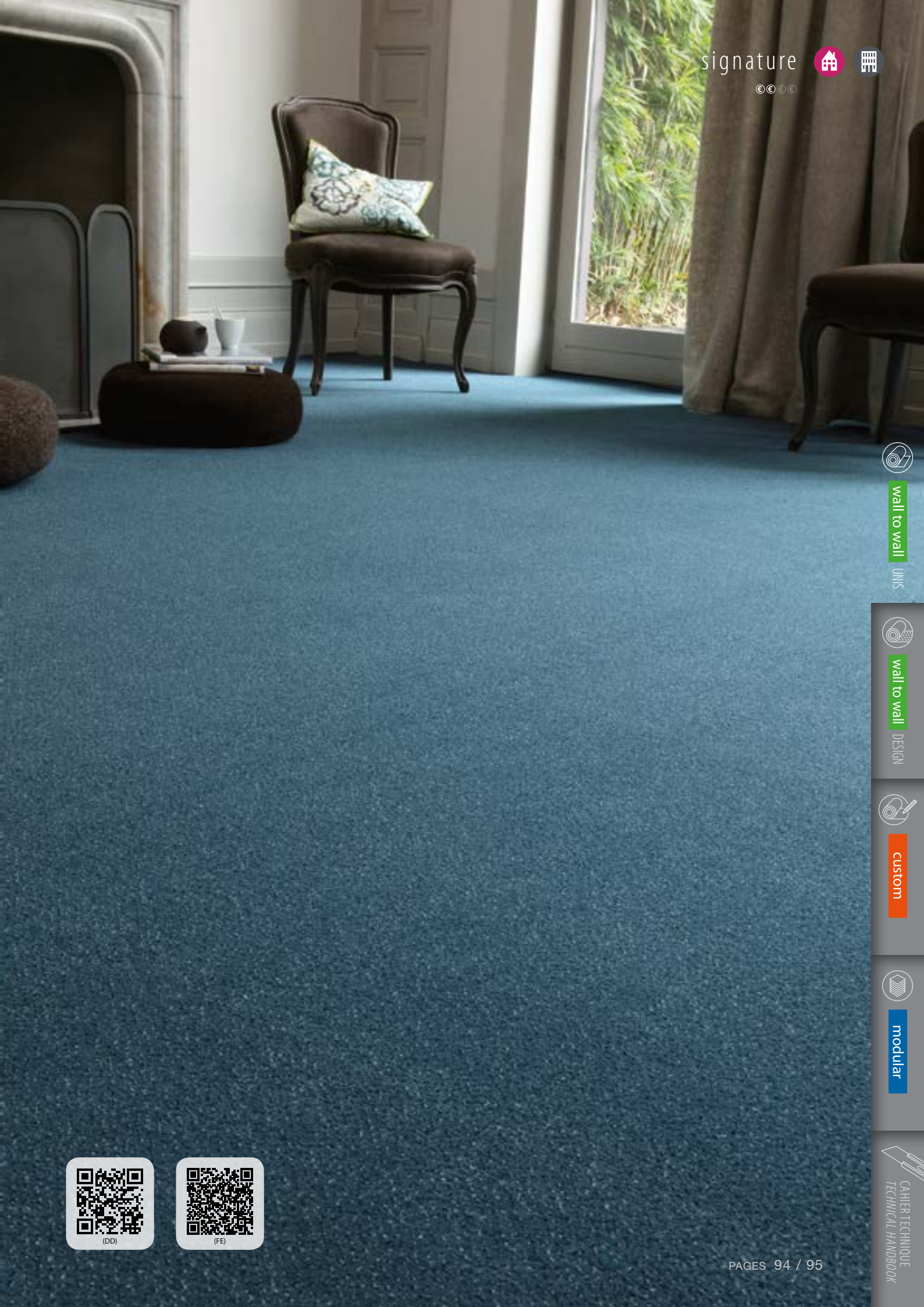
| f/Hz | 125 | 250 | 500 | 1000 | 2000 | 4000 |
|----------------|------|------|------|------|------|------|
| αs (DD) | 0,02 | 0,04 | 0,09 | 0,25 | 0,45 | 0,49 |
| αs (FE) | 0,03 | 0,07 | 0,30 | 0,37 | 0,39 | 0,50 |

Pose / Entretien / Traitement
Laying / Cleaning / Treatment
Verleghinweis / Reinigung / Behandlung
Plaatsinstructie / Reiniging / Onderhoud **www.balsan.com**
Instalación / Mantenimiento / Tratamiento
Posa / Manutenzione / Trattamenti
Układanie / Utrzymanie w czystości / Impregnacja

BALSAN se réserve le droit de modifier les caractéristiques de ce produit tout en conservant les mêmes qualités techniques. Dans le cadre d'une utilisation professionnelle, il est fortement conseillé d'utiliser des coloris moyens et foncés pour les pièces à grand trafic. De légères variations de coloris peuvent être observées entre les différents bains de teinture. / BALSAN reserves the right to modify the characteristics of this product while keeping the same technical properties. In the context of business use, we strongly recommend the use of darker colours for heavy traffic areas. Slight differences in colour may occur between different dye baths.



Designed and Made in France



wall to wall

UNIS



wall to wall

DESIGN



custom



modular



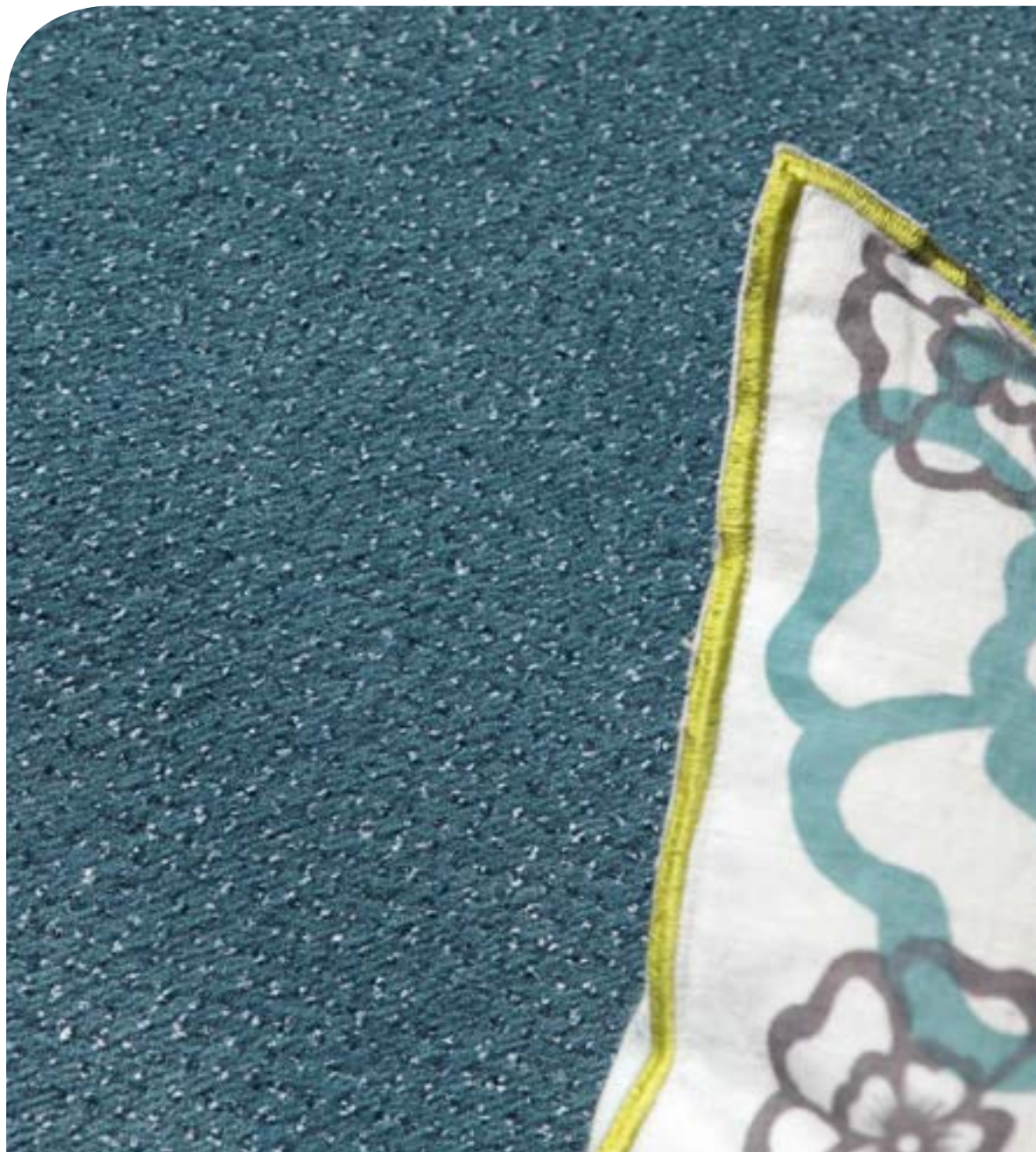
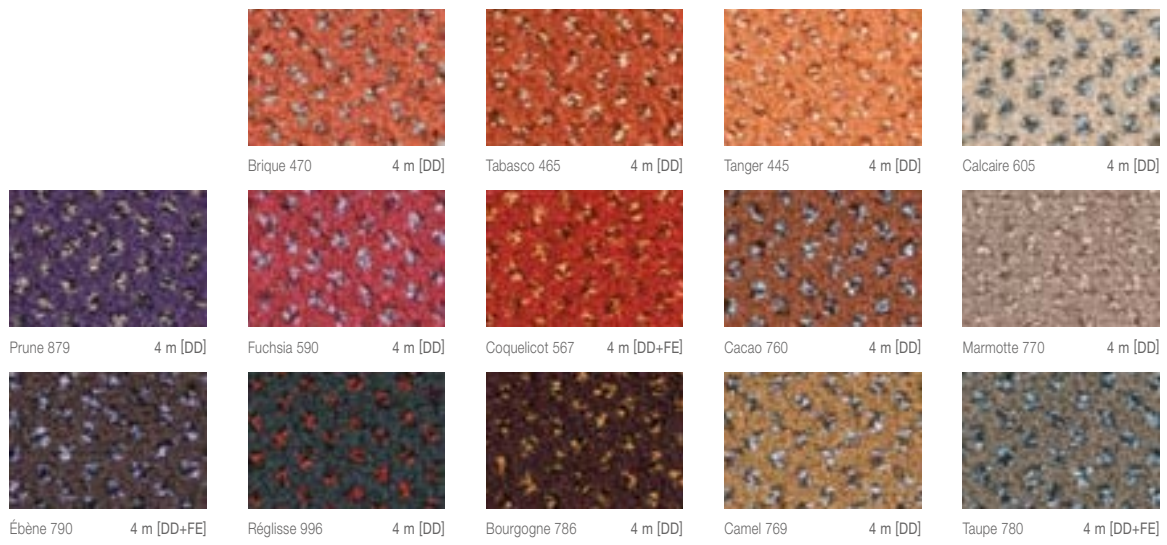
CAHIER TECHNIQUE
TECHNICAL HANDBOOK



(DD)



(FE)





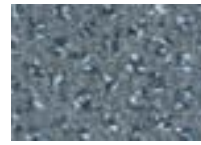
Anis 230 4 m [DD]



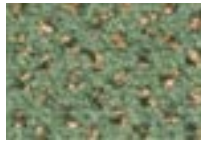
Fjord 166 4 m [DD]



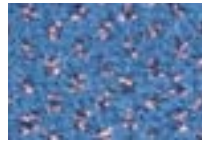
Prusse 192 4 m [DD+FE]



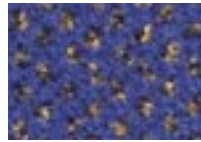
Grillon 980 4 m [DD+FE]



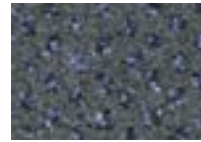
Amande 267 4 m [DD]



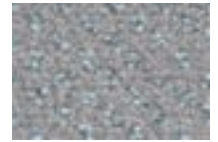
Chardon 180 4 m [DD]



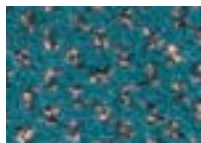
Navy 167 4 m [DD]



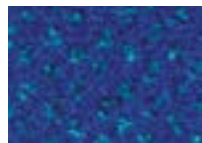
Orage 970 4 m [DD+FE]



Loup 915 4 m [DD]



Thuya 282 4 m [DD]



Cobalt 179 4 m [DD]



Marine 193 4 m [DD]



Onyx 992 4 m [DD+FE]



Étain 910 4 m [DD]



wall to wall

UNIS



wall to wall

DESIGN



custom



modular



CAHIER TECHNIQUE
TECHNICAL HANDBOOK